



ViciDocs EmailSafe

INTRODUCTION



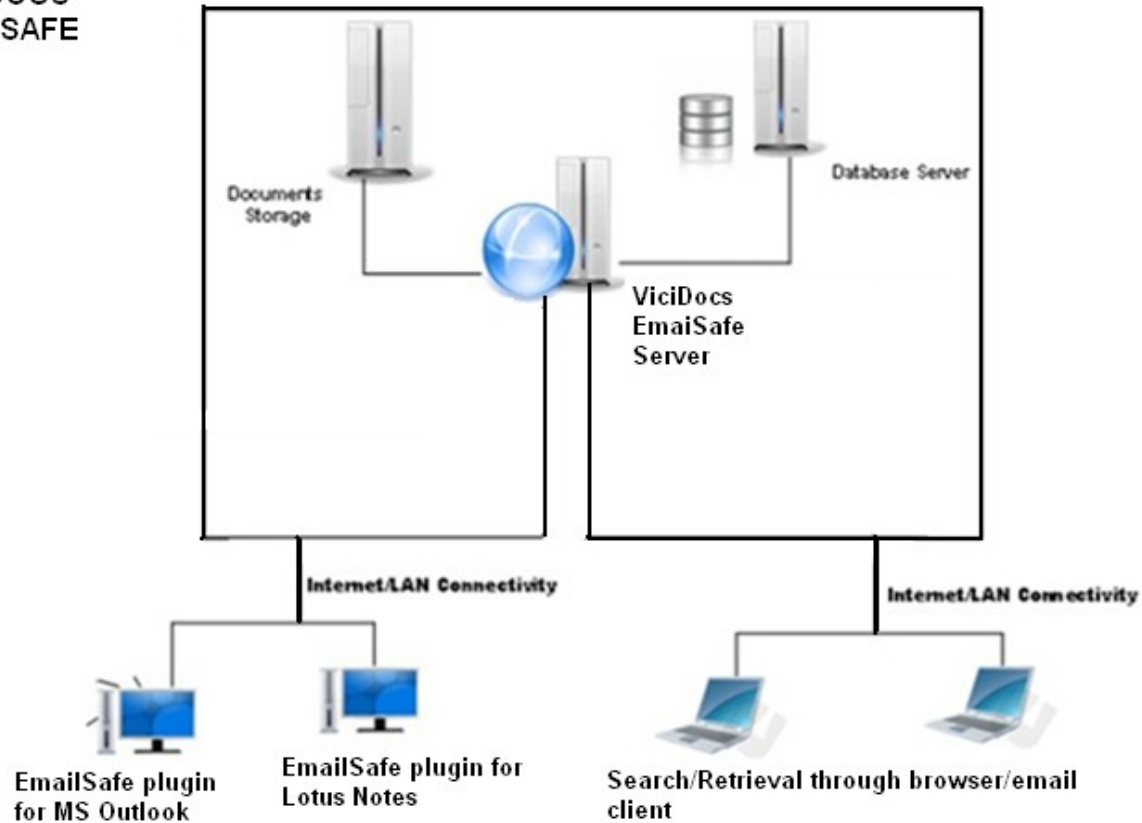
Email data management is a critical need today :

- ❖ It is estimated that today 60% of business critical information is stored within corporate messaging systems.
- ❖ A recent study of corporate IT users found that the average user sends 34 emails every day and receives 99 emails every day, which translates to a hefty 14.7 MB of email data per day, a 53% growth over last year.

ARCHITECTURE



VICIDocs
EMAILSAFE



ARCHITECTURE HIGHLIGHTS:

SCALEABILITY:

- ❖ True distributed architecture
- ❖ Storage can be scaled to multiple volumes
- ❖ File server based storage
- ❖ Adheres to industry protocols like XML, ODBC

SECURITY:

- ❖ Encrypted channels for data communication
 - HTTPS, HTTP, DCOM
- ❖ Supports Active Directory along with application security
- ❖ Access control granularity – more than 12 levels
- ❖ Hashed folder structure, separate from logical structure

FEATURES



- ❖ Support for popular mail clients like Microsoft Outlook, Outlook Express, Lotus Notes client etc.,
- ❖ Manual and Automatic storage of emails with user configurable options for replicating the folder structure and frequency of uploads.
- ❖ Full Text indexing of body and attachments as well.
- ❖ Metadata indexing of mail header.
- ❖ Retrieval of emails through mail client as well as through the browser.

BENEFITS



- ❖ Easier retrieval of information stored in emails.
- ❖ Aids legal/regulatory compliance.
- ❖ Reduces the amount of storage needed on mail servers helping them to run more efficiently.
- ❖ Eliminates the need for end users to employ individual archive files
- ❖ Seamless integration across Exchange/Outlook combination and Lotus Notes wherein mails stored from one platform can be viewed/searched upon from the other
- ❖ External devices like SAN can be used for centralized storage

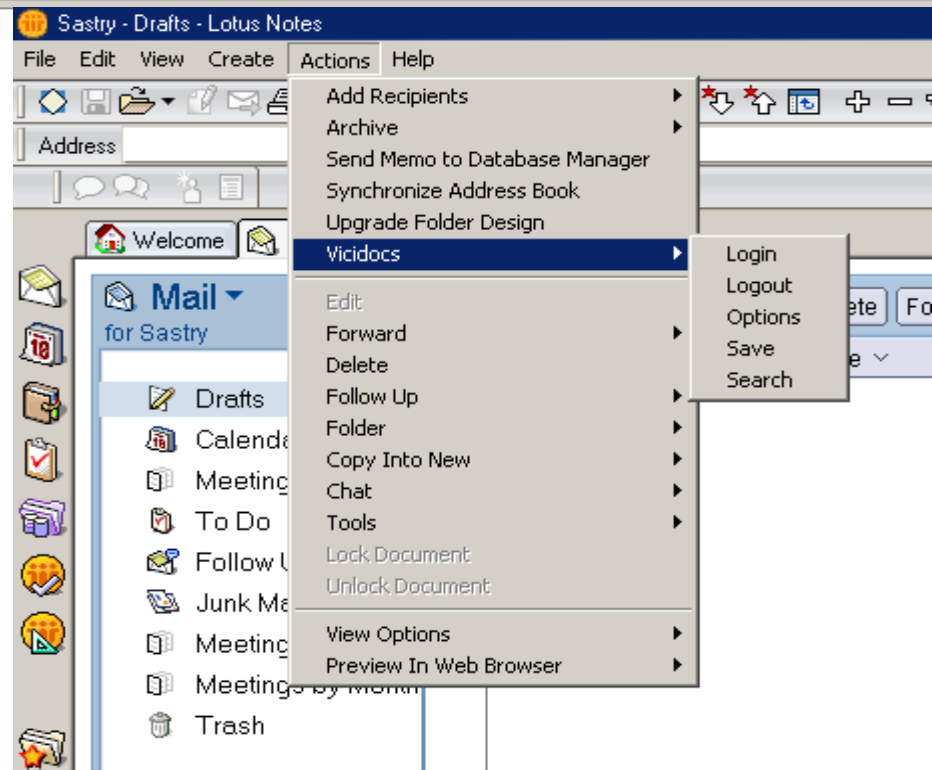
PLUGINS FOR POPULAR EMAIL CLIENTS:



- ❖ Outlook Toolbar depicting the ViciDocs options



- ❖ Menu Item in Lotus



CONFIGURATION:



Configuration Options:

- ❖ Allows the mapping of Outlook folders to Repository
- ❖ Multiple profile creation option.
- ❖ Auto deletion of mails from local client/Mail server

The image shows two overlapping dialog boxes from the ViciMail application. The 'ViciMail' dialog is on the left, and the 'Folder Settings' dialog is on the right.

ViciMail Dialog:

- Select Profile: Sastry (dropdown), Configure... (button)
- Manual Storage:
 - Replicate the folder structure as the ViciDocs repository
 - Ask the Destination folder
- Frequency: 2 (input), Hours (dropdown), Folder Select... (button)
- Purge Options:
 - Delete mail from my client after storage
 - Delete mail from repository after 4 (input) Years (dropdown)
- Buttons: Save, Close, Use Profile

Folder Settings Dialog:

- Mail Folder Path: Personal Folders\Inbox (input), ... (button)
- Replicate the same folder structure
- Use the following destination folder: MAILS\admin\Inbox\ (input), ... (button)
- Store attachments along with the mails content
- Index the attachments
- Buttons: Add, Delete
- Table:

S.No	Mail Folder Path	Destination Folder PC...	Conte...	Index ...
1	Personal Folders\Inbox	MAILS\admin\Inbox\	Yes	Yes
2	Personal Folders\Wenka...	Personal Folders\Wen...	Yes	Yes

Buttons: Save, Cancel

ARCHIVAL AND PURGE RULES:



Rules can be defined for Archival and Purging at the server level:

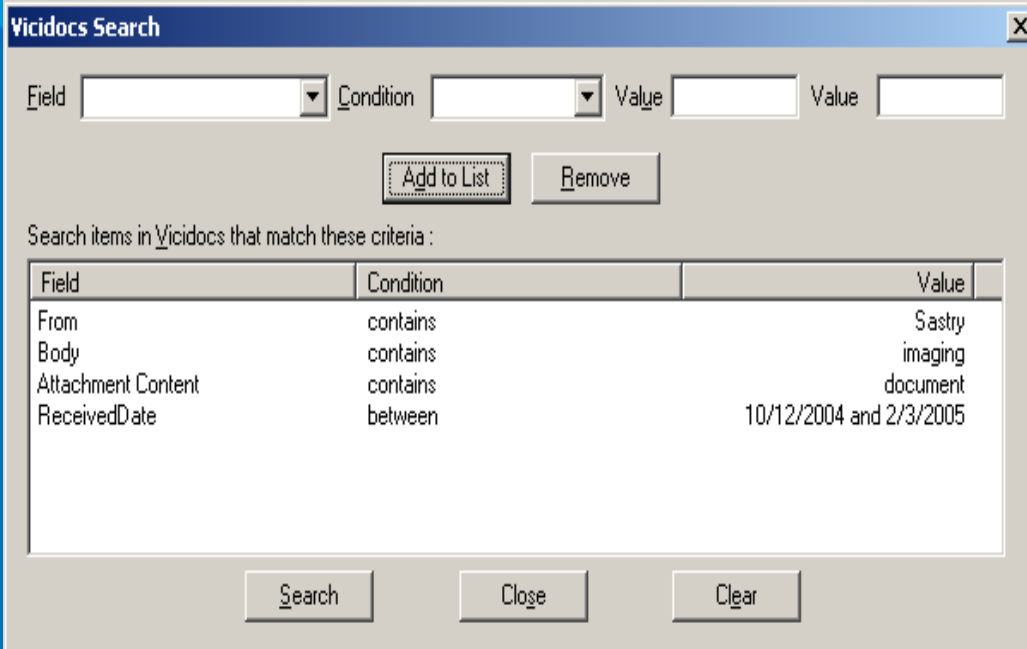
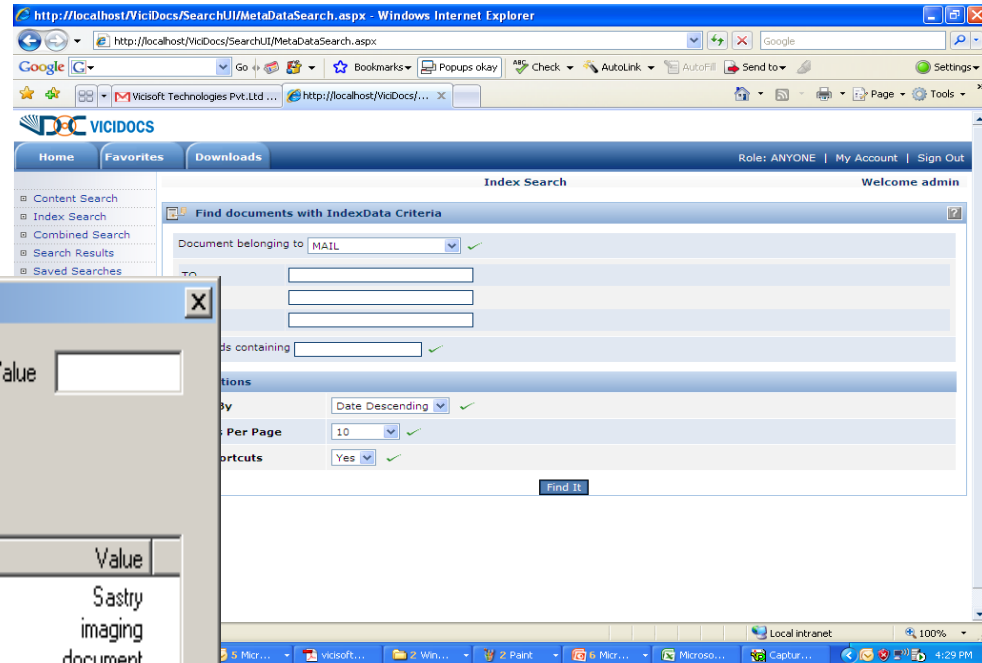
Parameters include:

1. Age of the email
2. Size of the email (including the attachments)
3. Rules at a user level or at a global level.
4. From a specific user (s)
5. With a specific word/phrase in the subject.

SEARCH OPTIONS:



- ❖ Search/Retrieval through browser or email client
- ❖ Multiple Search conditions like contains, Doesn't contain, equals to, Date Range etc..





THANK YOU

For any further information please contact:

Vicisoft Technologies Private Limited

Email: info@vicisoft.com

URL: www.vicisoft.com

Phone:

INDIA

Hyderabad : +91-40-27743168

UAE

Sharjah: +971-6-5572900